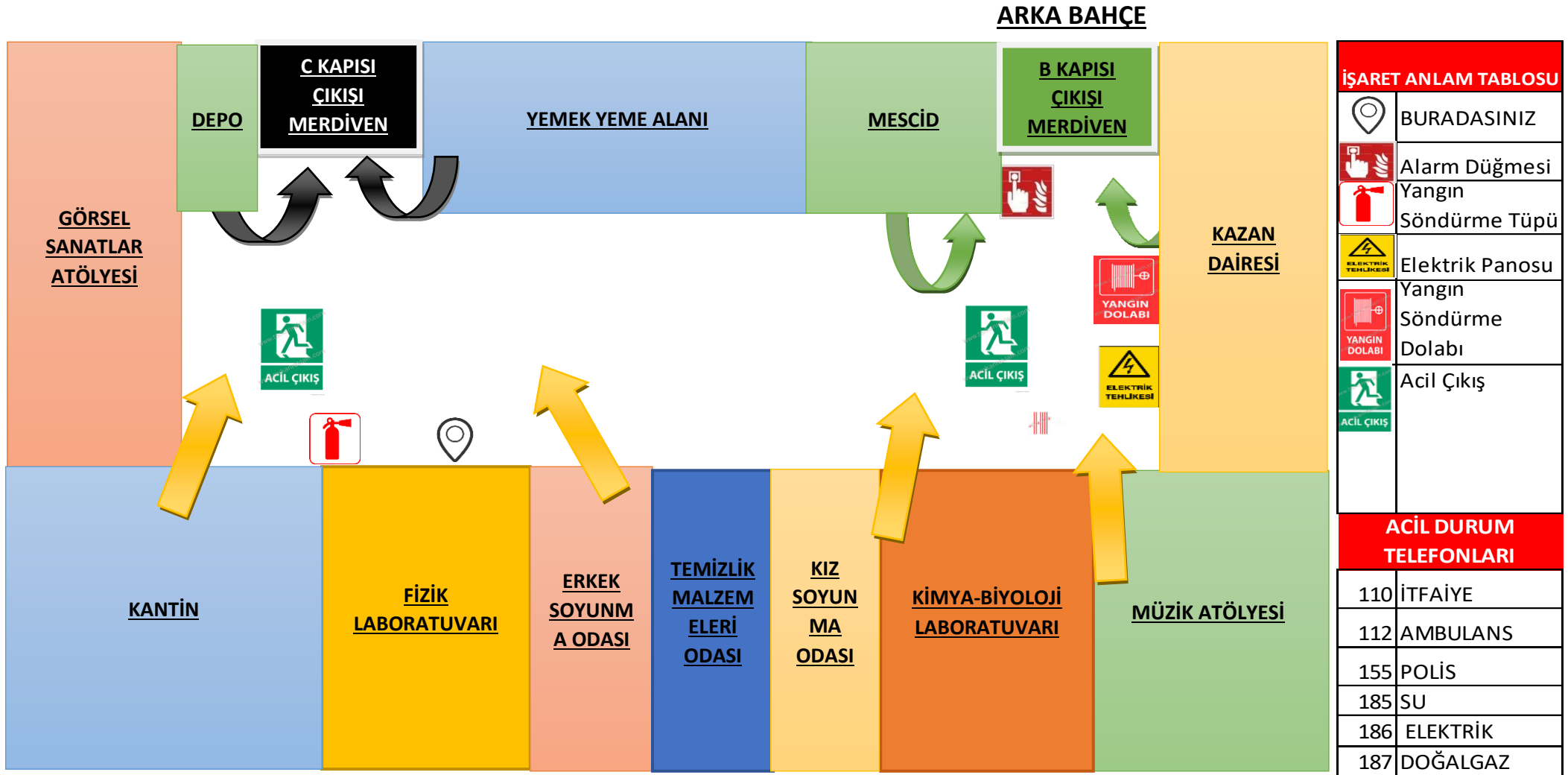


MEHMET PİSAK ANADOLU LİSESİ **BODRUM KAT** TAHLİYE PLANI



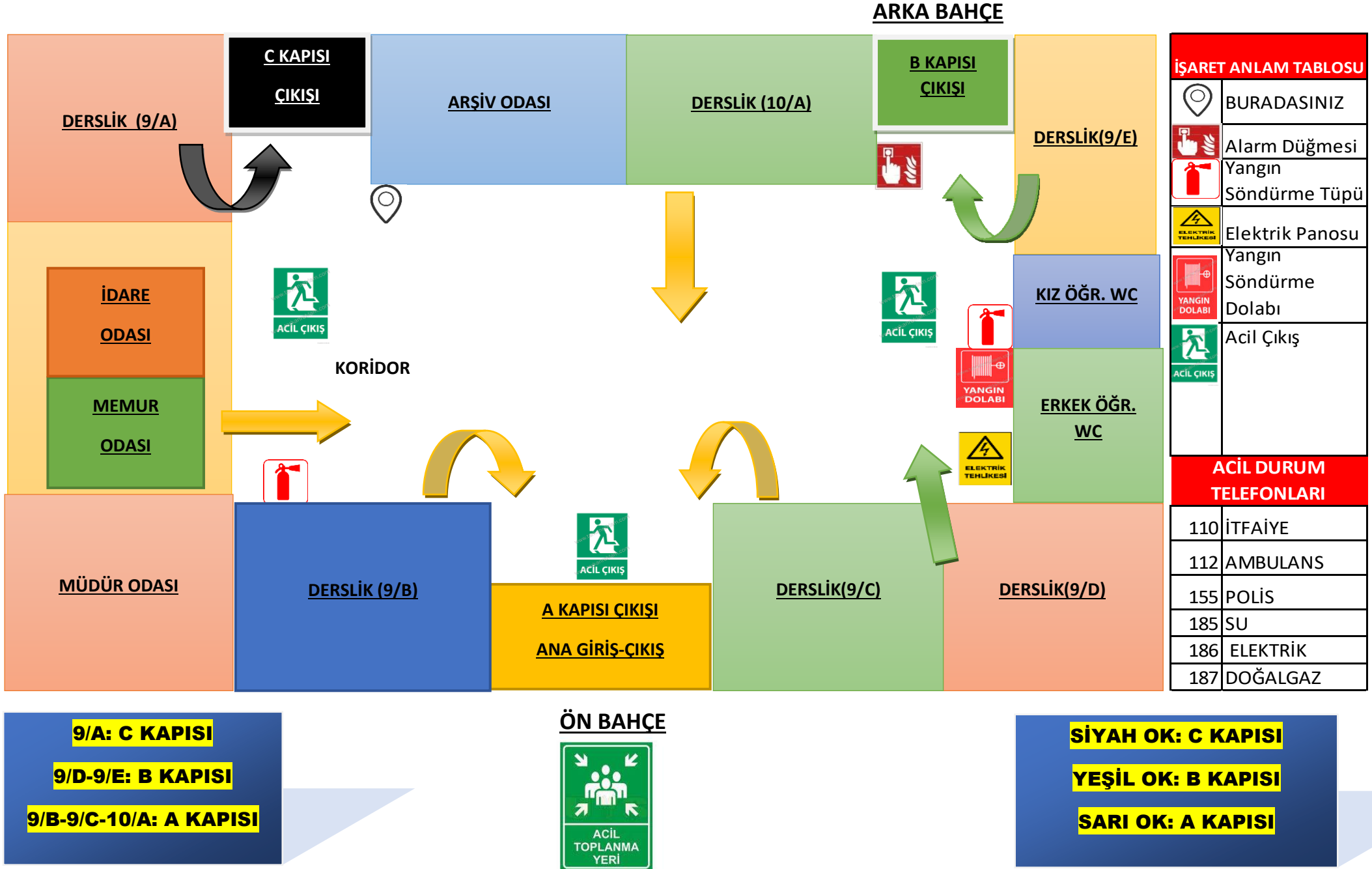
GÖRSEL-YEMEK ALANI: C KAPISI
MESCİD: B KAPISI
KANTİN-LABOR.: A KAPISI

ÖN BAHÇE

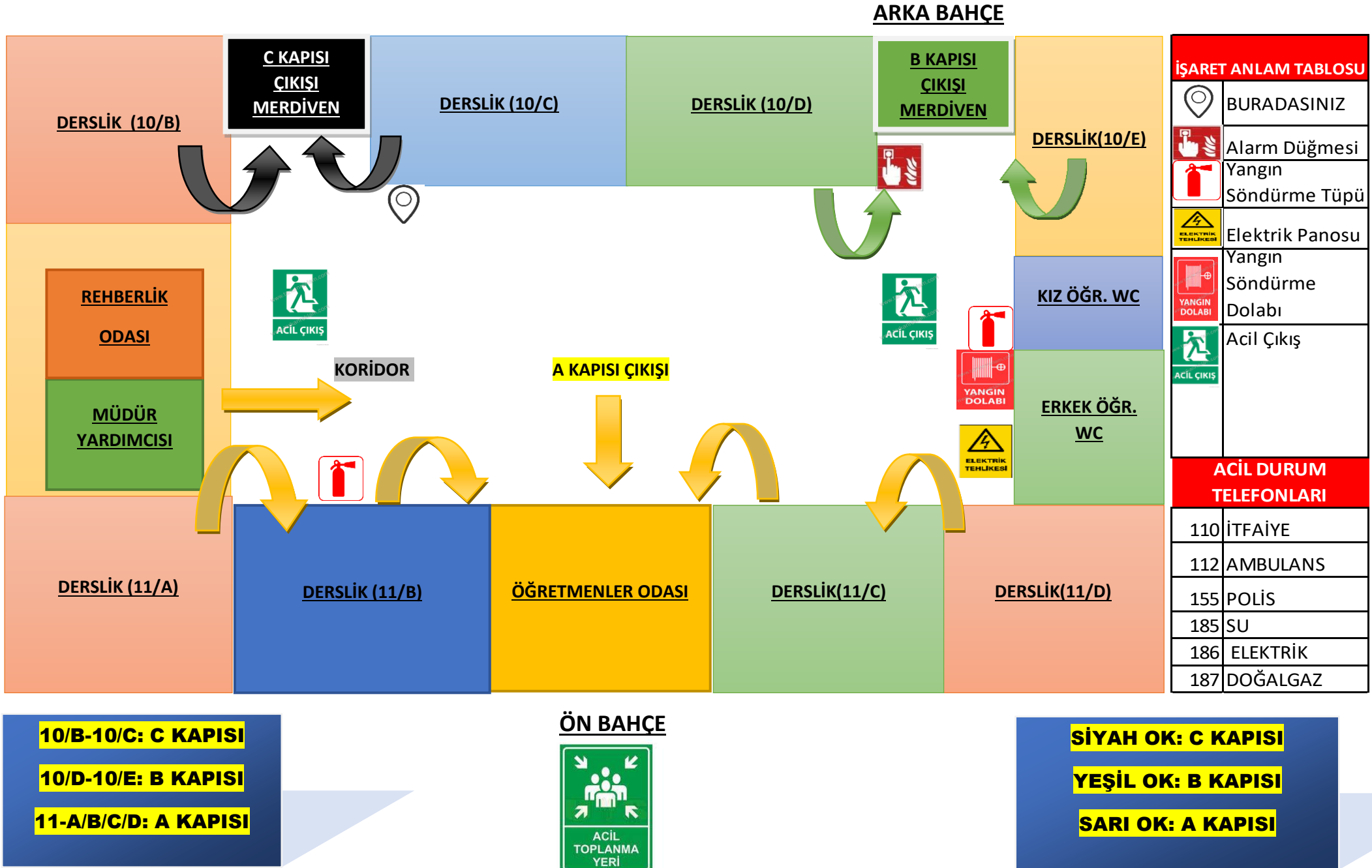
ACİL TOPLANMA YERİ

SİYAH OK: C KAPISI
YEŞİL OK: B KAPISI
SARI OK: A KAPISI

MEHMET PİSAK ANADOLU LİSESİ **GİRİŞ KAT** TAHLİYE PLANI



MEHMET PİSAK ANADOLU LİSESİ 1. KAT TAHLİYE PLANI



MEHMET PİSAK ANADOLU LİSESİ 2. KAT TAHLİYE PLANI

